

Remote Deposit Capture Scanner Installation Guide for Windows

Prior to beginning your scanner installation, you will need the following information.

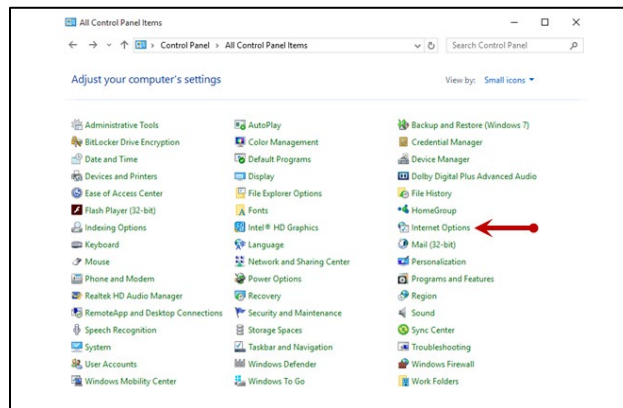
- Cambridge Savings Bank’s RDC platform is accessed through the Business Online Banking platform. You will need to login to the platform to access Remote Deposit Capture.
- Your Merchant ID and scanner model/scanner number
- **NOTE:** To install the software, you may need administrative privileges for installation purposes. Consult with your IT department for access. Follow the steps below to install your scanner:

Configuring Temporary Internet Files and History Setting - Internet Explorer Only

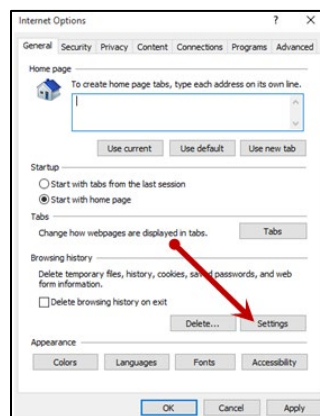
Step 1: Open **Control Panel** from your *Start* menu.

Step 2: Select **Internet Options**.

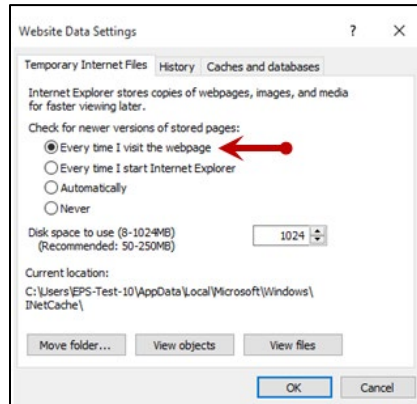
NOTE: You may need to select **Network** and **Internet** and then **Internet Options**.



Step 3: From the tabs at the top of the *Internet Options* window, select **General**, then click **Settings** under the *Browsing history* section, select the **Settings** option.



Step 4: The *Temporary Internet Files and History Settings* window appears. Under *Check for newer versions of stored pages*, select the **Every time I visit the webpage** option.



Step 5: Select **OK** at the bottom of the *Temporary Internet Files and History Settings* window and then select OK from the bottom of the *Internet Options* window

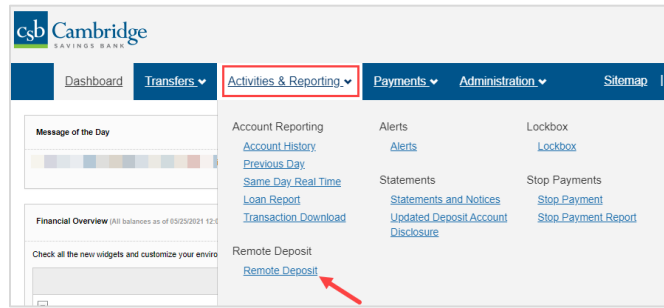
Installing Device Control

Step 1: Navigate to Cambridge Savings Bank’s RDC application through Cambridge Savings Bank’s online banking.

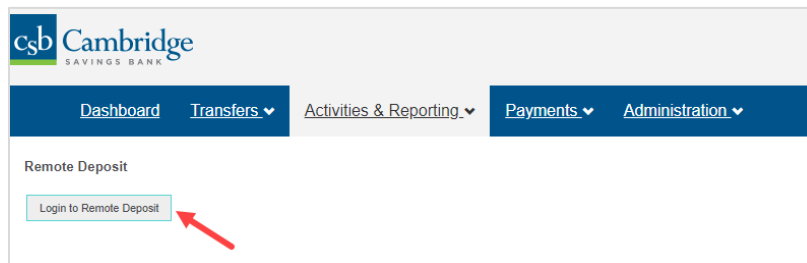
Step 2: On the Business Online Banking login page, enter your Company ID, User ID and password, and click the LOGIN button.



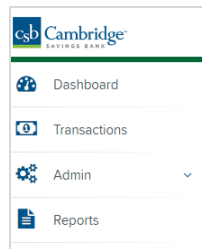
Step 3: From the **Dashboard** homepage, click the **Activities & Reporting** tab and select **Remote Deposit** from the dropdown menu.



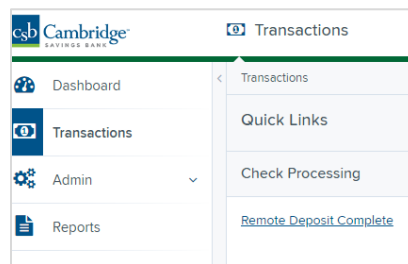
Step 4: From the **Remote Deposit** page, click the **Login to Remote Deposit** button.



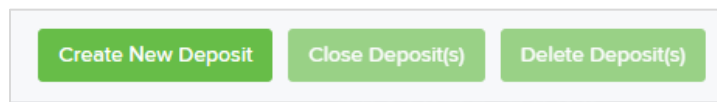
Step 5: Click **Login**. Select **Transactions** from the left main menu.



Step 6: Under **Check Processing**, choose **Remote Deposit Complete**.

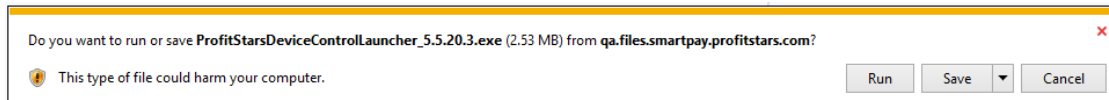


Step 7: The **Open Deposits** page appears. Select **Create New Deposit**, as shown below.

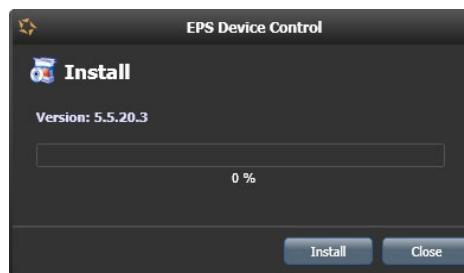


Step 8: The *Device Control* prompt appears, informing you that Device Control is attempting to launch. Select **Run** to continue.

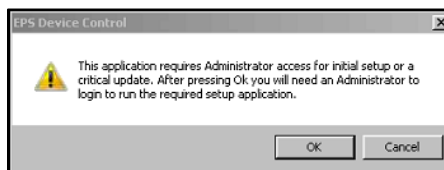
For **Google Chrome** users, click on the **ProfitStarsDeviceCon....exe** (as shown in the second image below).



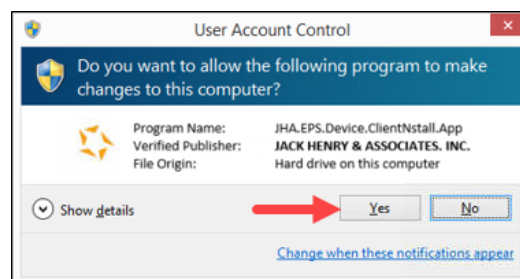
Step 9: The system will prompt you to begin installing EPS Device Control. Click **Install** to continue. This may take several minutes.



Step 10: A prompt appears to ensure that a user with Administrator rights to the computer will proceed with the installation. Click **OK** to continue.



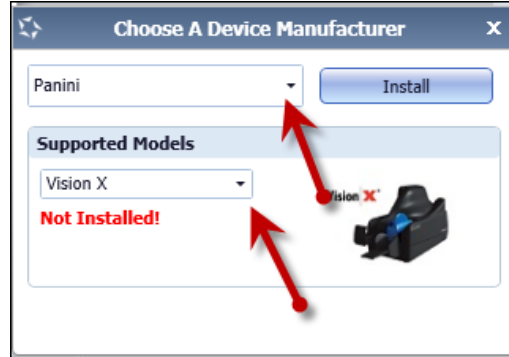
Step 11: A prompt may appear for the application to make additional changes. Select **Yes** to continue.



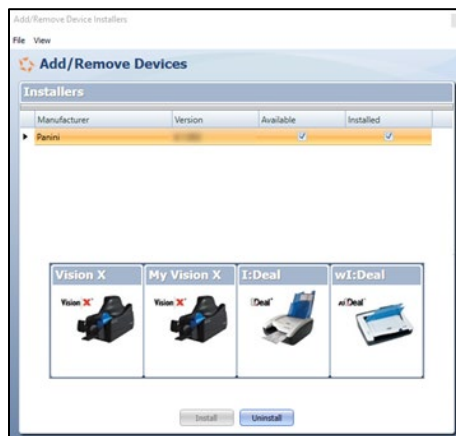
Choose the scanner and model you wish to install, and then select **Install**. Cambridge Savings Bank's Panini Scanner models are:

- I:Deal

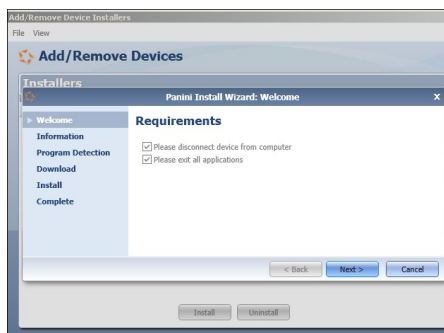
- WI:Deal
- Vision X



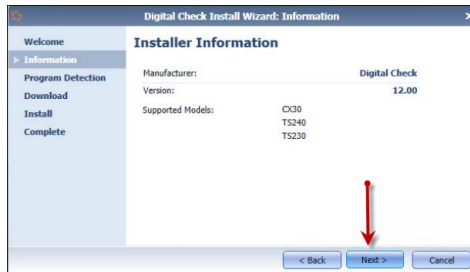
Step 12: The *Add/Remove Devices* window appears. Choose the scanner you wish to add, and then click **Install**.



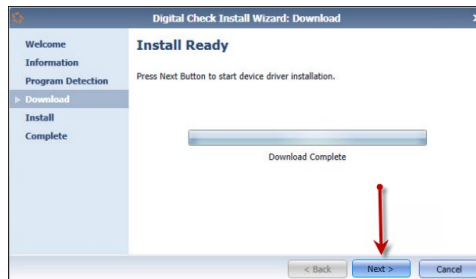
Step 13: Disconnect the scanner's USB or power cable from your computer, and exit all other applications. Click **Next** to continue.



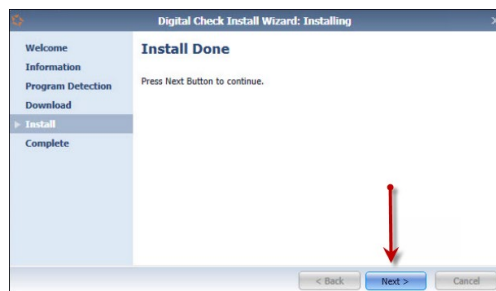
Step 14: The *Install Wizard* displays the *Installer Information* prompt. Choose **Next** to continue.



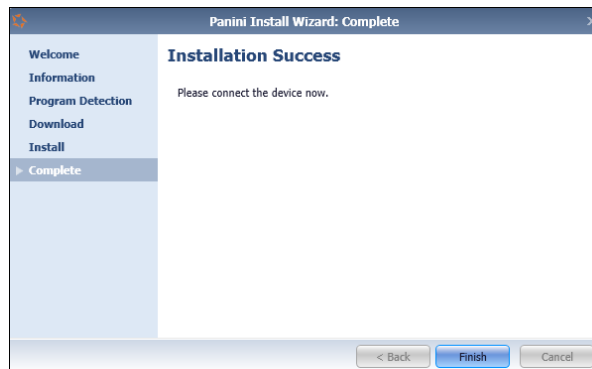
Step 15: The *Install Wizard* displays the *Install Ready* prompt. Select **Next** to continue.



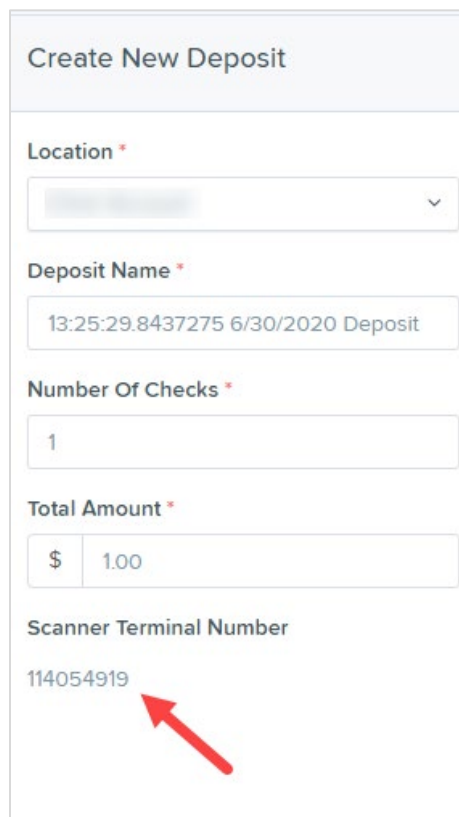
Step 16: The *Install Wizard* displays the *Install Done* prompt. Click **Next** to continue.



Step 17: After the *Install Wizard* has completed, connect the scanner to your computer, and then click **Finish**. The scanner is now installed.



NOTE: When you begin making deposits, ensure that the **Scanner Terminal #** field is populated on the *Create New Deposit* page. When this field is populated, you are ready to begin scanning checks.



Create New Deposit	
Location *	<input type="text"/>
Deposit Name *	13:25:29.8437275 6/30/2020 Deposit
Number Of Checks *	1
Total Amount *	\$ 1.00
Scanner Terminal Number	114054919