

Remote Deposit Capture Browser and System Requirements

For an optimal experience, a high-speed internet connection is recommended. In addition, the following components are required for working with Cambridge Savings Remote Deposit Capture platform.

For the PC:

- Local administrative rights are needed to install the Device Controls for using the scanner with the Remote Deposit Capture platform.
- USB port 2.0 or higher
- .NET® Framework 4.6.2 or higher

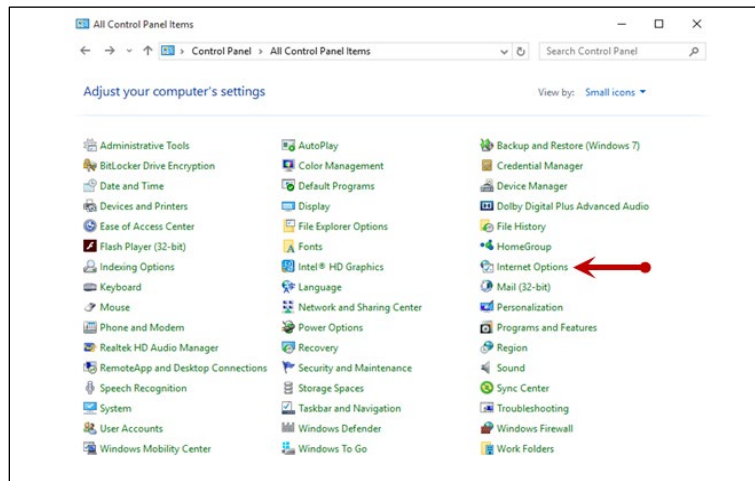
	Operating System	Browser	Scanner	Model Supported
Microsoft®	Windows 8.1 Windows 10	Google Chrome™ Microsoft Edge®	Panini®	I:Deal® Vision X
			Digital Check®	CX30 TS240
Apple®	macOS 10.14.x Mojave macOS 10.15.x Catalina macOS 11.x Big Sur	Google Chrome™	Digital Check®	CX30 TS240

NOTE: The current version of Chrome and its two previous versions are supported.

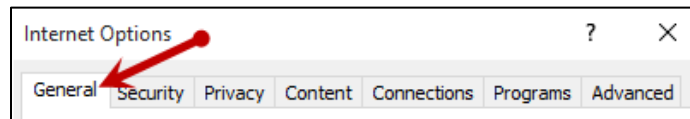
Configuring Temporary Internet Files and History Settings – Internet Explorer Only

Configuring these settings can keep the pages in the system consistently refreshed with information.

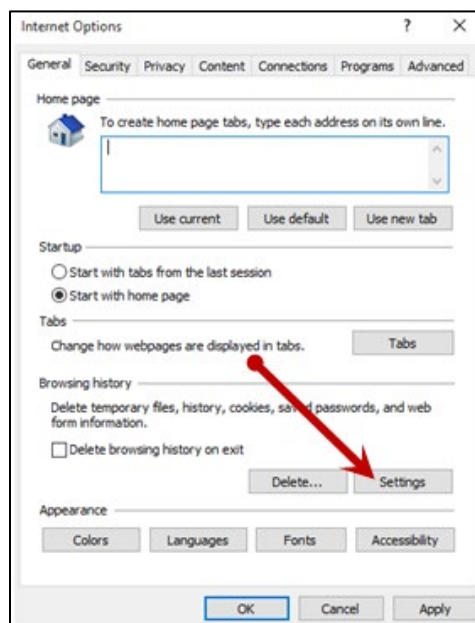
1. Open **Control Panel** from your *Start Menu*.
2. Select **Internet Options**. Note: You may need to select **Network and Internet** and then **Internet Options**.



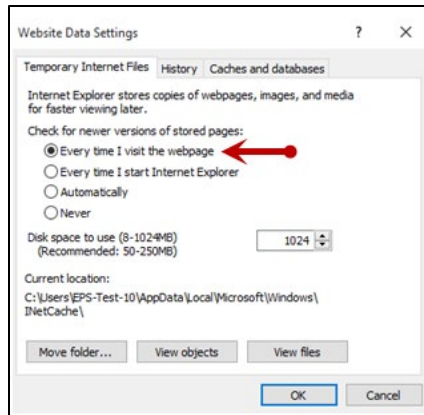
3. From the tabs at the top of the Internet *Options* window, select **General**.



4. Under the *Browsing history* section, select the **Settings** option.



5. The *Temporary Internet Files and History Settings* window appears. Under *Check for newer versions of stored pages*, select the **every time I visit the webpage** option.



6. Select **OK** at the bottom of the *Temporary Internet Files and History Settings* window.
7. Click **OK** from the bottom of the *Internet Options* window.